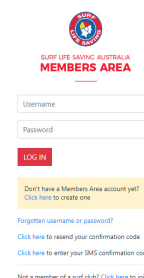


WORKING WITH CHILDREN TRAINING REQUIREMENTS FOR MEMBERS

1
ONE

MEMBERSHIP

Join/renew your membership through the [SLSA Member Area](#) or your club.
Make sure you have an on line account for the members Area

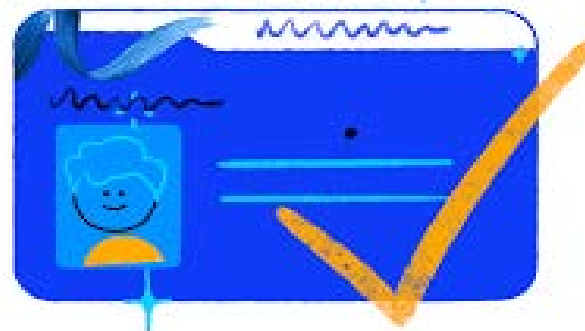


2
TWO

WORKING WITH CHILDREN CHECK (BLUE CARD)

If you are over 18 and in any of the listed positions within your club - you MUST hold a current Working With Children Check (Blue Card) -

Refer to SLSQ Policy MSO6 [CLICK HERE](#)



3
THREE

SLSQ CYRMS INDUCTION

Go to the Members Area

1. Select E-Learning
2. Select Training Library
3. Select 'SLSQ CYRMs',

Upon completion - this will be recorded on your members details

**CYRMSINDUCTION
DUE DATE
31 OCTOBER 2021**

4
FOUR

SLS CHILDREN SAFE AWARENESS COURSE

Go to the Members Area

1. Select E-Learning
2. Select Training Library
3. Select 'SLS Safety & Wellbeing'
4. Select 'SLS Child Safe Awareness' course

Upon completion this will be recorded on your members details

**SLSA CHILD SAFE
DUE DATE
31 OCTOBER 2021**

5
FIVE

FREQUENCY

All members with blue cards MUST complete both courses in the 21/22 season.

Training to be redone for both courses when you apply for a Blue Card renewal

WHY

WHY ARE WE DOING TWO COURSES ? .

SLSQ prioritises the safety of children and young people. Both courses are required to meet state legislation under the Working With Children Risk Management and Screening Act 2000